

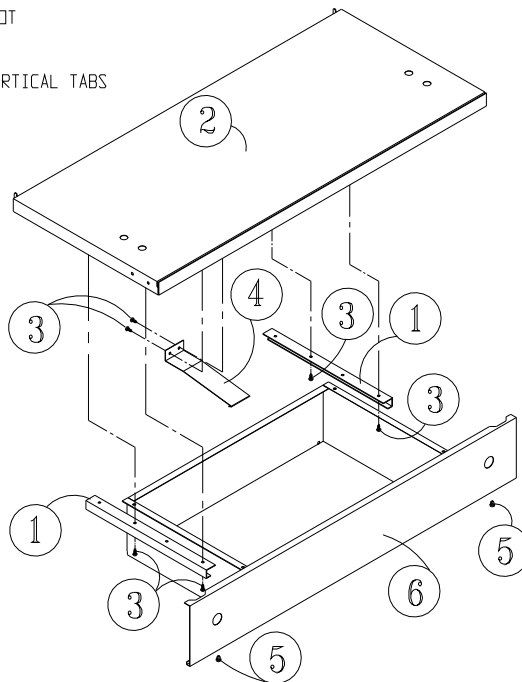
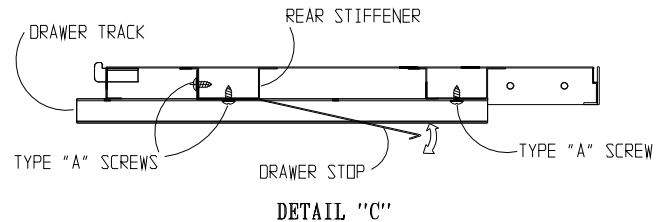
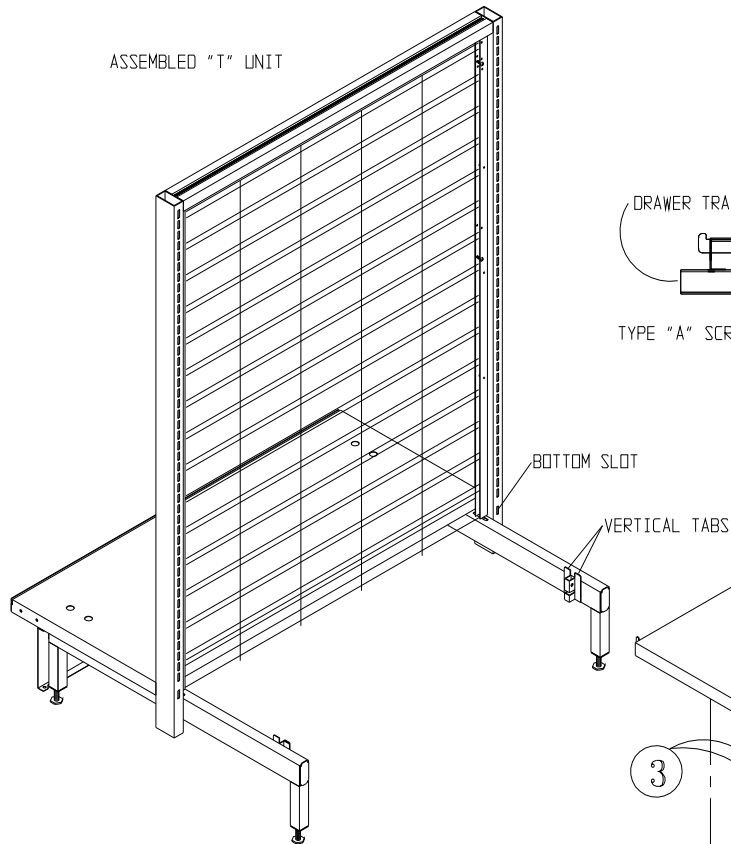
ROYSTON MODULAR MERCHANDISING SYSTEM

"T" UNIT DRAWER KIT (FOR UNIT W/O CASTERS)

PARTS LIST

NO.	DESCRIPTION	QTY.
1	"C" FORM DRAWER TRACK	2
2	BASE SHELF	1
3	#10 X 1/2 PH TH TYPE "A" SCREW	6
4	DRAWER STOP	1
5	PLASTIC PUSH-IN BUTTONS	2
6	DRAWER ASSEMBLY	1

ASSEMBLED "T" UNIT



STEP 1: IF TRACK (1) ARE NOT INSTALLED, ATTACH TWO "C" FORM DRAWER TRACK (1) TO BOTTOM OF BASE SHELF (2) PER DETAIL "C", WITH FOUR SHEET METAL SCRS. (3) HAND TIGHTEN.

STEP 2: ATTACH DRAWER STOP (4) TO SIDE WALL OF BASE SHELF (2) REAR STIFFENER IN TWO HOLES PROVIDED WITH TWO SCREWS (3).

STEP 3: INSTALL BASE SHELF (2) BY ENGAGING THE TWO HOOKS INTO THE BOTTOM SLOT IN EACH UPRIGHT THEN LOWER THE FRONT OF THE SHELF, BEING SURE THE UPRIGHT VERTICAL TABS ON THE HORIZONTAL UPRIGHT TUBES ENGAGE THE SLOTS IN THE BASE SHELF STIFFENER. MOVE THE UPRIGHT TO MAKE THIS HAPPEN!

STEP 4: IF REQUIRED, INSTALL TWO PLASTIC PUSH-INS (5) IN TWO HOLES OF THE DRAWER FRONT (BOTTOM EDGE).

STEP 5: SLIDE DRAWER ASSEMBLY (6) INTO THE TWO DRAWER TRACK CHANNELS (1). REACH INSIDE DRAWER AND LIFT THE DRAWER STOP (4) ENOUGH TO ALLOW THE DRAWER TO SLIDE PAST THE STOP. STOP MAY BE ADJUSTED UP OR DOWN BY CAREFULLY BENDING IT SO THE DRAWER CANNOT BE PULLED OUT OF DRAWER TRACK.

NOTE: UNIT MAY HAVE ONE OR TWO DRAWERS AS DESIRED.